

JMD
MANUFACTURING
INC.

59 Fountain St.
Framingham, MA 01702 (USA)

Tel : (508) 620-6563
Fax: (508) 620-7563
1-800-752-5JMD (563)

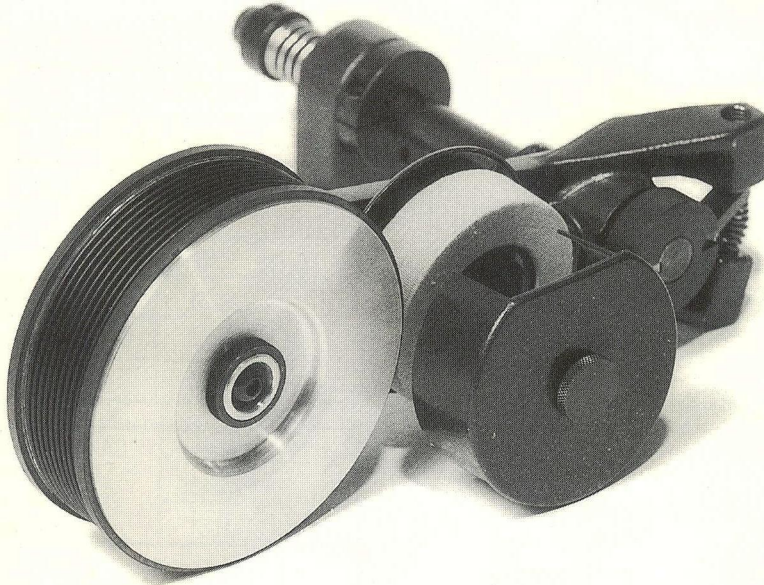
OM-PRINT™

Contact Printers

Slimline Convertible Case Coder

The Slimline is a standard conveyor line mounted case coder which incorporates a number of engineering and operating improvements over previous models. This new coder is 40% thinner...it fits between rail and conveyor bed spacing as small as 2 1/2". It has a sliding plate ink roller mounting and micrometer adjustment for positive control of inking pressure. A new ink system cover controls ink evaporation and dust contamination. A completely new tight registration and reset mechanism assures positive stop and return without oscillation.

The Slimline also has a unique swing-away feature with spring-loaded pin detent to maintain accurate registration...even after it has been swung away from the line and back again many times. Yet, it retains the outstanding features of the convertible coder. It is convertible from right to left hand mounting and reset to continuous random coding...**in the field.** Very heavy-duty construction and simple operation insures long, trouble-free imprinting and code-marking under the most demanding industrial conditions.



Hand is convertible from left to right hand in the field. However, we will assemble to either hand if specified in the order.

IMPRINT SIZES

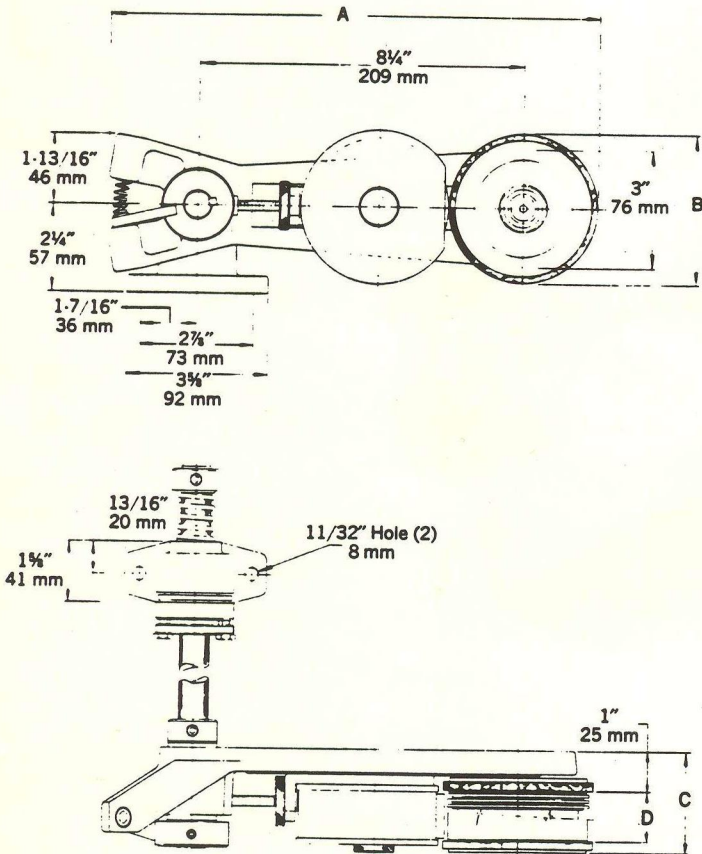
The Slimline Convertible Case Coder is available with printing cylinders of 10", 12", 15" and 18" circumferences. Print width is available in 1", 2", 3" or 4".

IMPRINT CAPABILITIES

The Slimline may be adjusted to print continuously, applying a code mark or other identification randomly down the entire length of the case. It may also be used to register code marks in a specified area on the case. The optional, positive spring return reset has been completely redesigned to provide very tight registration accuracy.

TYPE ACCOMODATION

Baselock rubber type or adhesive-backed rubber printing plates may be used. Coders are supplied with either plastic baselock rings or metal cylinder sleeves depending on whether type or plates are used. Metal baselock rings are also available for very heavy duty applications. When ordering, please specify which you require.



INKING SYSTEM

Slimline coders can be supplied with two inking systems to suit a variety of applications. The standard systems are: Pre-filled OM-PRINT™ Ink Cartridges or Porelon® Ink Cartridges.

The coder has an improved micrometer-type ink system adjustment which provides ink feed and extended type life. The entire ink cartridge assembly is mounted on a sliding plate. Ink cartridges are protected by a metal cover which retards ink evaporation and reduces dust contamination.

INSTALLATION

The Slimline Coder can be mounted on any conveyor, cartoner, case sealer or processing equipment with its heavy duty mounting bracket. It can be mounted in any position, right or left hand, vertically or horizontally, upside down or right side up.

MAINTENANCE

All spare parts and expendable items such as ink and type are kept in stock and are shipped as orders are received.

SERVICE

Coders may be returned to the factory where they will be cleaned and adjusted with charge only for labor, parts to replace worn ones, missing or broken items and shipping costs.

PRINT WIDTH		C		D	
Inches	MM	Inches	MM	Inches	MM
1	25	2 1/2	63	1 1/8	28
2	50	3 1/2	89	2 1/8	54
3	76	4 1/2	114	3 1/8	79
4	101	5 1/2	139	4 1/8	104
5	127	6 1/2	165	5 1/8	130
6	152	7 1/2	190	6 1/8	155

CIRCUMFERENCE		CARTON LENGTH RANGE FOR REGISTERING IMPRINTING	A	B
Inches	MM			
10	254	5" to 10" 127 mm - 254 mm	12 3/16 309 mm	3.180" 81 mm
12	305	6" to 12" 152 mm - 305 mm	12 1/2" 317 mm	3.820" 97 mm
15	381	8" to 16" 203 mm - 406 mm	13" 330 mm	4.780" 121 mm
18	457	9" to 20" 228 mm - 508 mm	13 7/16" 341 mm	5.740" 146 mm

JMD Manufacturing, Inc., 59 Fountain Street, Framingham, Massachusetts 01702 (USA)
Tel: (508) 620-6563 Fax: (508) 620-7563 1-800-752-5JMD (563)